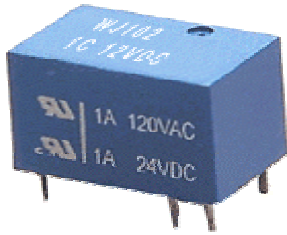
 <h1 style="margin: 0;">WANJIA</h1> <p style="margin: 0;">Relays for advanced technology</p>	ULTRA-MINIATURE PC BOARD TYPE POWER RELAY	WJ102-RELAYS
---	---	--------------



- Ultra-small type with dimensions.
- High sensitivity:200mW nominal operating power
- Sealed type available
- Low coil power consumption

### SPECIFICATIONS

#### Contact

Item	Type	WJ102
Arrangement		1 Form C
Contact Material		Silver alloy
Contact Resistance (By voltage 6V 1A)		Max.100m•
Rating		
Nominal switching capacity		3A 120VAC/24VDC
Resistive load (cos•=1)		1A 120VAC/24VDC
Inductive load (cos•=0.75•0.8)		0.3A 120VAC 0.3A 24VDC
Max. Switching voltage		120VAC 60VDC
Max. Switching current		3A
Max. Switching power		600VA 120W
Expected life(min.ope)		
Mechanical(at 120 cpm)		1×10 <sup>7</sup>
Electrical(at 20 cpm)		1×10 <sup>5</sup>

#### Characteristics

Item	Type	WJ102(0.36W)	WJ102(0.2W)
Operate Time		Max.8msec.	Max.10msec.
Release Time		Max.4msec.	
Operating humidity		45 to 85% RH	
Initial breakdown voltage			
Between coil & contact		500VAC (50/60Hz)for 1min.	
Between open contacts		500VAC (50/60Hz)for 1min.	
Insulation Resistance		Min.100M• (500 VDC)	
Ambient temperature		-30••+60•	-30••+75•
Temperature rise(Max.)		45deg.	25deg.
Shock	Functional	Min.10G	
Resistance	Destruction	Min.100G	
Vibration	Functional	10 to 55 Hz at double Amplitude of 1.5mm	
Resistance	Destruction	10 to 55 Hz at double Amplitude of 1.5mm	
Unit weight		Approx.3.5g	

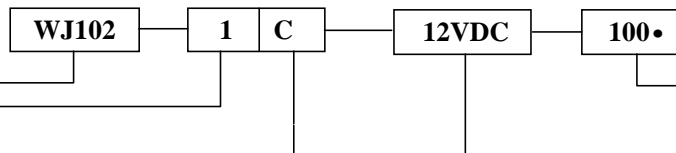
#### Coil

Nominal operating power	0.2 to 0.45W
-------------------------	--------------

### TYPICAL APPLICATION

- 1.Telecommunication.
- 2.Domestic appliance.
- 3.Office machines.
- 4.Audio equipment,etc.

### ORDERING INFORMATION



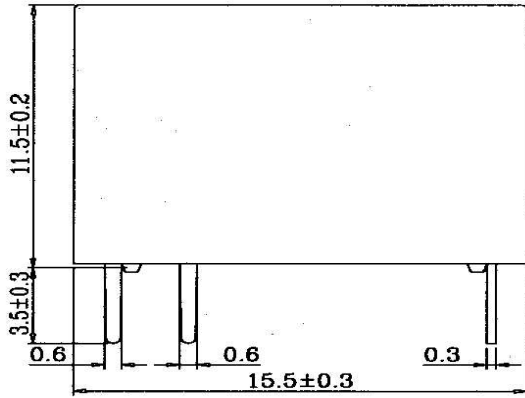
Type	Number of pole	Contact form	Coil voltage(DC)	Coil resistance
WJ102	1:1pole	A: 1 form A	3, 5, 6, 9, 12, 24V	25,70,100,220,400,1600 : 0.36W
		B: 1 form B		45,120,180,400,700,2280 : 0.2W
		C: 1 form C		Nil : 0.45W

**COIL DATA (at 20•)**

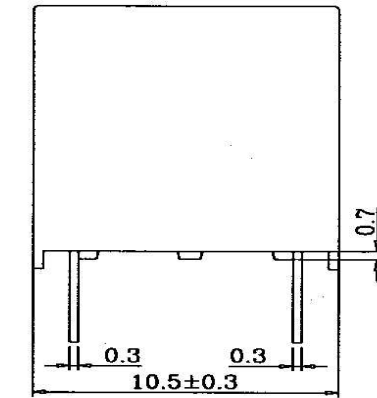
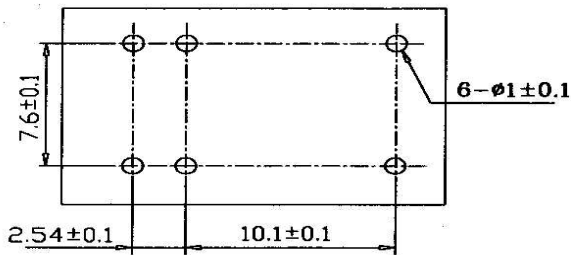
Nominal Voltage (VDC)	Pick-up Voltage VDC(Max.)	Drop-out Voltage VDC(Min.)	Coil Resistance (•)±10%	Nominal operating Power (W)	Coil Resistance (•)±10%	Nominal operating Power (W)	Max.Allowable Voltage
3	2,25	0,15	25	0,36	45	0,2	130% of nominal Voltage
5	3,75	0,25	70		120		
6	4,5	0,3	100		180		
9	6,75	0,45	220		400		
12	9	0,6	400		700		
24	18	1,2	1600		2880		

**DIMENSIONS**

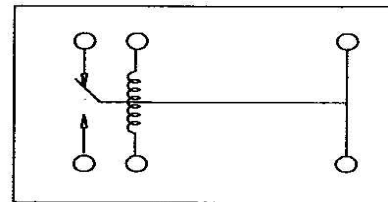
Unit: mm



(BOTTOM VIEW)



(BOTTOM VIEW)



DONGGUAN WANJIA RELAY CO.,LTD  
 ADD: SIHUAN ROAD ,XITOU INDUSTRIAL ZONE,HOUJIE TOWN,  
 DONGGUAN CITY, GUANGDONG,CHINA.  
 POST CODE:523952  
 TEL: 86-769-5914550(1)  
 FAX: 86-769-5914553  
 E-mail: dgwjddq@pub.dgnet.dg.cn

Note: The relative changes for the specification will not be advised in the future.